

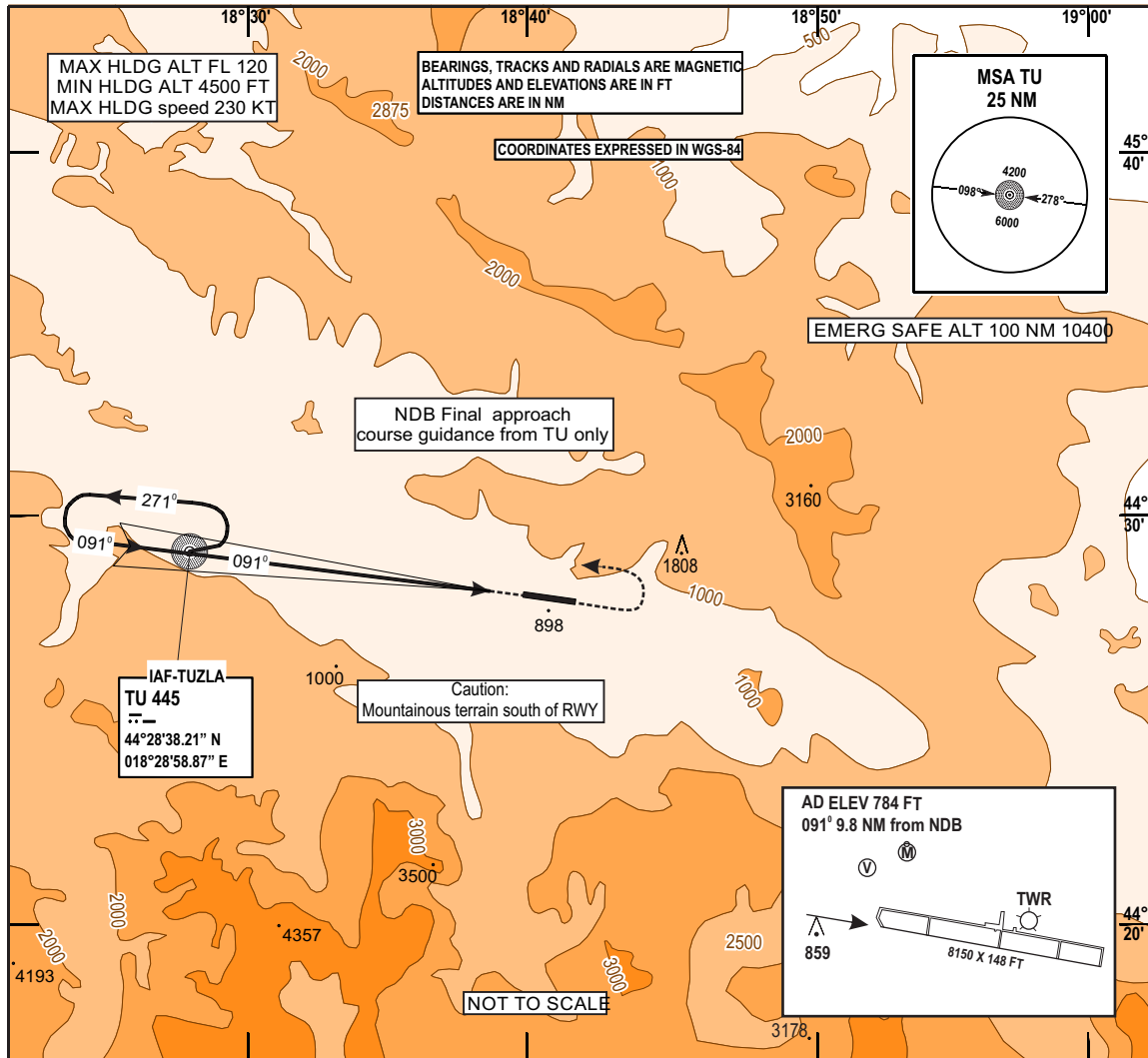
**INSTRUMENT  
APPROACH  
CHART - ICAO**

**AERODROM ELEV 784 FT  
HEIGHTS RELATED TO  
THR RWY 09 ELEV 765 FT**

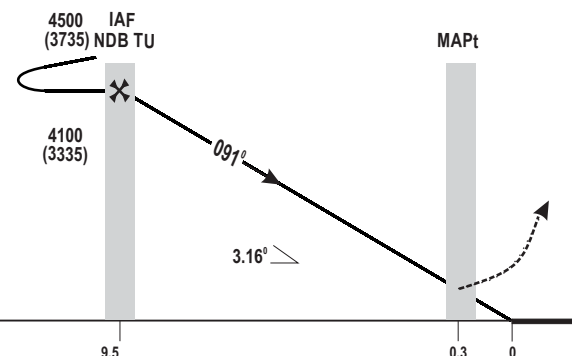
**TRANSITION  
ALTITUDE  
10 000 FT  
VAR 5° E (2020)**

**APP 120.350  
TWR 132.925**

**TUZLA (LQZT)  
NDB RWY 09**



CHG: MAG VAR, MAGNETIC BEARINGS, EDITORIAL CHANGES;



**MISSED APPROACH:**

Turn **LEFT** climb to **4500 FT**, then direct **TU** and hold

OCA (H)	A	B	C	D
NDB 09	2080 (1315)	2080 (1315)	2080 (1315)	2080 (1315)
Circling*	2080 (1315)	2080 (1315)	2280 (1515)	2390 (1625)

FAF TO MAPt DISTANCE 9.5 NM					
KT	60	90	120	150	180
MIN : SEC	9:29	6:19	4:44	3:47	3:10

\*Circling not authorized south of RWY 09 due highly mountainous terrain

THIS PAGE INTENTIONALLY LEFT BLANK